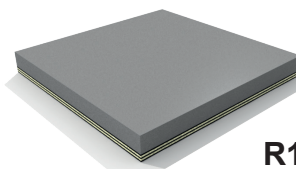
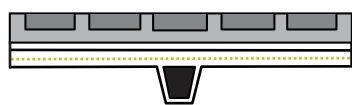


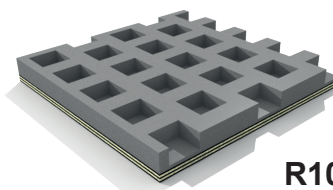
R20 Sez. A



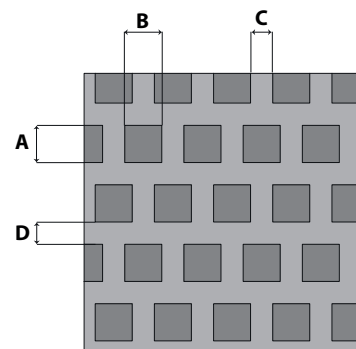
R1



R25 Sez. Z



R10



R10 PROFILE DIMENSION	A	B	C	D
mm	10	10	5	5

TENSILE CORE	BREAKING STRENGTH (DIN 53504)	MATERIAL	ELONGATION AT WORKING LOAD	ELONGATION AT BREAK
CTK 500	500 daN/cm	Aramide Cord	< 1%	< 5%

TOP COVER	TYPE	HARDNESS Sh.A	COLOR
NR-50GR	NR/SBR	50 ± 5	Grey
NR-60GR	NR/SBR	60 ± 5	Grey
NR-70WT	NR/SBR	70 ± 5	White

All rubber compound are wear resistant and no marking

BELT DIMENSION	WIDTH	THICKNESS	LENGTH	V-GUIDE
mm	From 50 to 200 ± 1	8 ± 0,5	From 1680 ± 10	13x8 (Sez. A) 10x6 (Sez. Z)

OTHER TECHNICAL CHARACTERISTICS:

- Heat resistance continuous up to 60 °C, peaks 80 °C
- Moderate resistance to acid and alkali medium concentration
- Minimum pulley diameter 50 mm
- Grinded surface

